

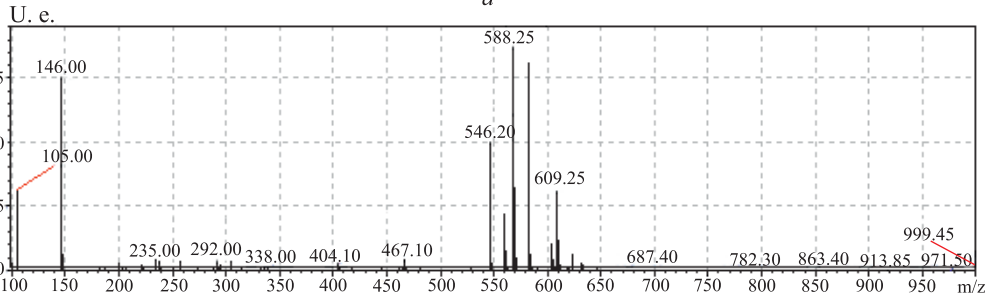
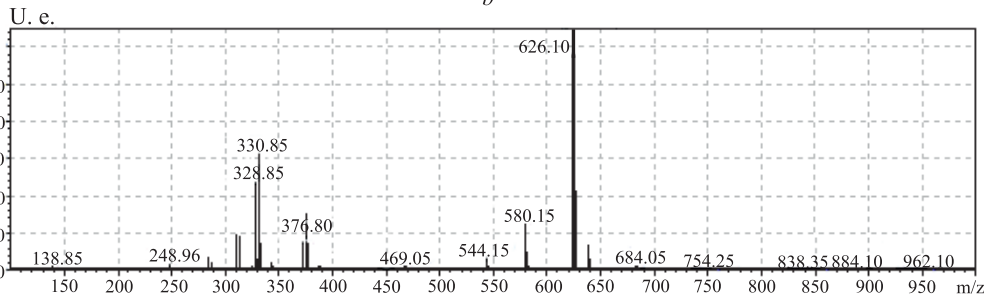
a*b*

Fig. 2. ESI-MS spectra of CPF-bab-Z1 in positive (*a*) and negative (*b*) ions registration modes.

Interpretation of signals (cations: $[M + H]^+$ 546.20, $[M + Na]^+$ 568.21, $[M + K]^+$ 584.20, $[M + ACN + Na]^+$ 609.24;
 anions: $[M + Br]^-$ 626.10 and 624.00, $[M + Cl]^-$ 580.20, $[M - H]^-$ 544.20)