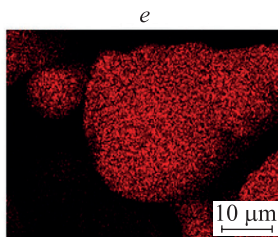
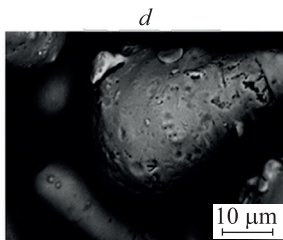
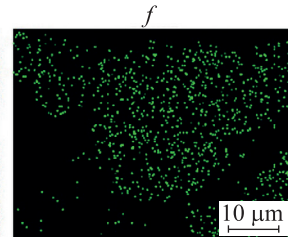


$\text{Sn}L_{\alpha 1}$

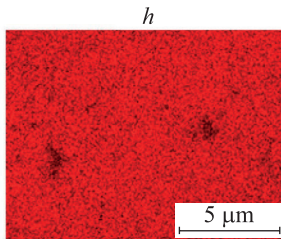
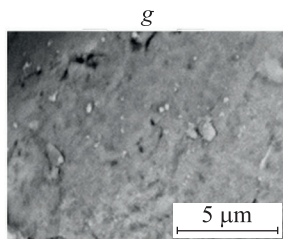
$\text{Ag}L_{\alpha 1}$



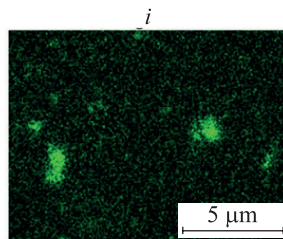
$\text{Sn}L_{\alpha 1}$



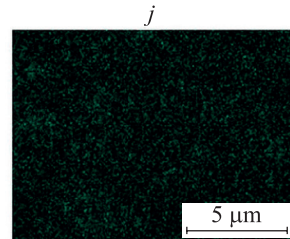
$\text{Cu}K_{\alpha 1}$



$\text{Sn}L_{\alpha 1}$



$\text{Ag}L_{\alpha 1}$



$\text{Cu}K_{\alpha 1}$

Fig. 5. SEM images of the alloy powders $\text{Sn}_{94.7}\text{Ag}_{5.3}$ (a – c), $\text{Sn}_{99.6}\text{Cu}_{0.5}$ (d – f), $\text{Sn}_{94.0}\text{Ag}_{4.8}\text{Cu}_{1.2}$ (g – j) in topographic mode (a, d, g) and in compositional mode (b, c, e, f, h – j)