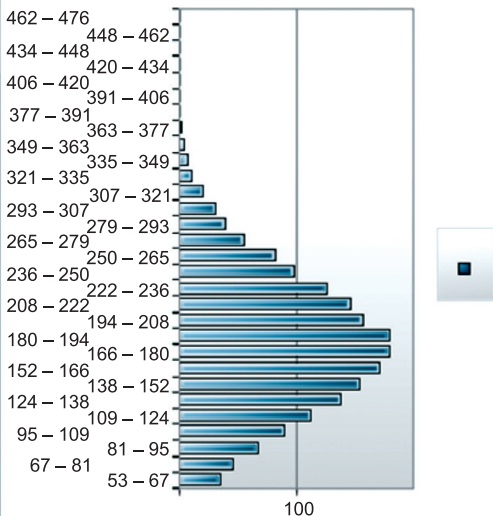
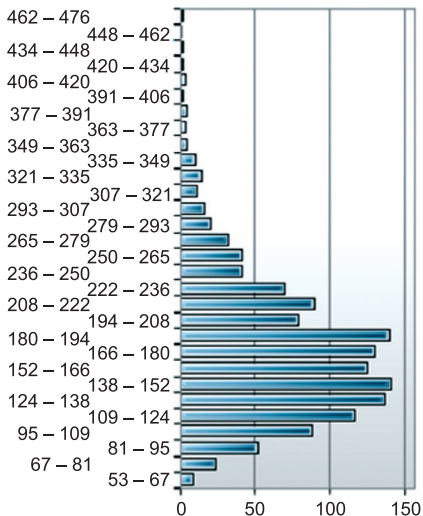


Data from research

Data from approximation:



Statistic info

Average: 176.20511000709698

Standard deviation: 64.3147429991841

 $x + 3\sigma$: 369.14933900464928Values in range ($x - 3\sigma$; $x + 3\sigma$): 98.72Approximated to: Normal ($\mu = 176.205110007097$, $\sigma = 64.3147429991841$)

Fig. 2. Experimentally obtained (left) and theoretical (normal, right) distributions of the number of TPCMs to the number of steps until the moment comes when $W^A = W^B$ for 1000 simulations